

Metastorm Integration Manager Gateway



Automating Data Integration Amongst Systems and Partners

“Edge systems” are computing systems not under the direct control of the organization but participating in electronic business processes. Automating access to such edge systems challenges companies because of their unique requirements for low setup and operational costs, greater transaction monitoring and security, as well as transaction auditing and compliance. Further challenges in connecting and maintaining them into corporate ecosystems include creating consistency across different technology stacks (platforms, communication protocols, etc.) and integration with existing corporate standards and processes.

Metastorm Integration Manager Gateway (MIM Gateway) addresses this need by providing additional functionality atop Metastorm Integration Manager’s core infrastructure. It provides easy, secure, scalable and managed Data Integration solutions to endpoints that do not or cannot run Metastorm’s native robust Data Integration software. MIM Gateway extends the valuable capabilities of Metastorm Integration Manager (MIM) to edge systems. It provides facilities for reducing costs when automating bi-directional data exchange with non-MIM nodes using a host of data exchange protocols including FTP, SFTP, FTPS or other proprietary commercial products such as Sterling Commerce’s CONNECT:Direct or Computer Associates’ XCOM.

Simple Yet Enterprise-Scale Solution

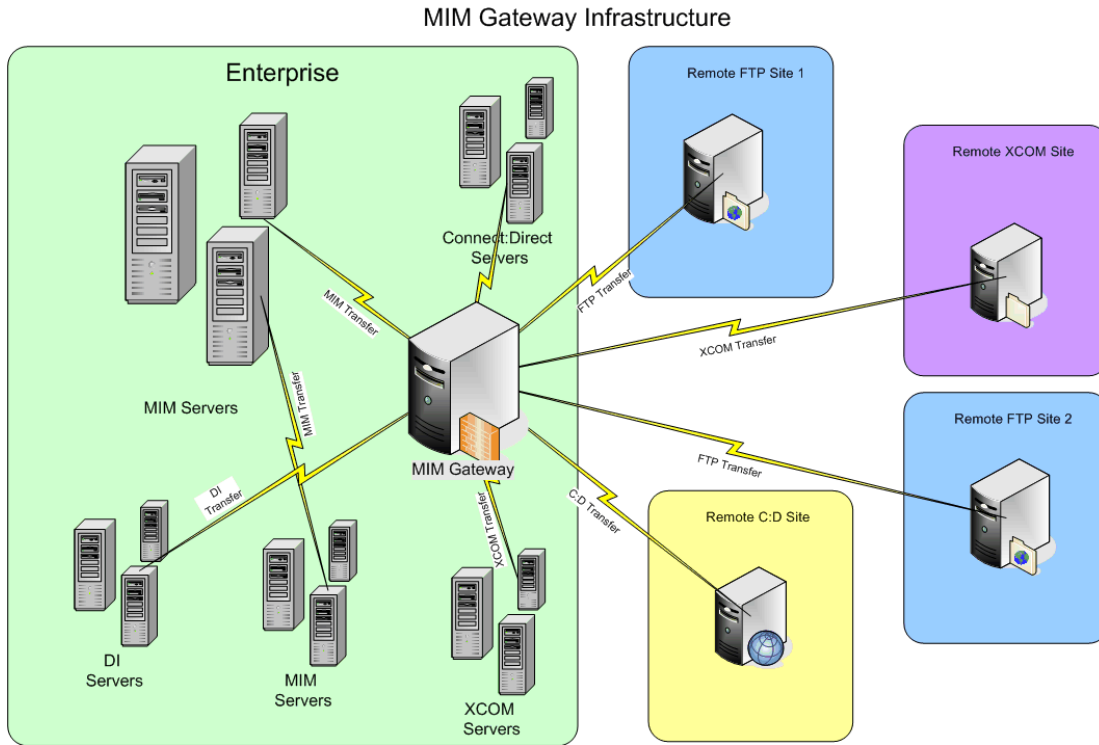
Reach Out and Call Someone – Although WebSphere MQ, a leading Enterprise Application Messaging platform, is the most robust transport mechanism for Metastorm Integration Manager, FTP and other transfer protocols are often required both within an enterprise (Intranet) and/or external to an enterprise (Extranet, Internet). MIM Gateway allows you to designate one or more MIM installations as a “Gateway”, placed in- or outside enterprise firewalls (i.e. in the DMZ and/or on the Intranet). MIM Gateway then manages files transfers to non-Metastorm Integration Manager nodes.

Key Features

- **End Points and Partners**
 - No additional Software: Endpoints require no special software to participate in sophisticated end-to-end process-driven managed file transfers.
 - Maintain Existing/Simple Processes: Whether they be existing processes where files are created (such as a web server) or new business functions requiring simplicity over functional richness, partners and other endpoints simply operate on the processing they’re use to and MIM Gateway takes care of the rest.
 - Standards-based Protocols: FTP, SFTP, FTPS, CONNECT:Direct, and XCOM.
- **Centralized Management**
 - Organize and Deploy: Quickly configure or change endpoints centrally to realize new integration requirements.
 - Integrate Endpoints with Processes: See clientless hosts participate in sophisticated and secure enterprise processes such as legacy systems, Web Services, and other batch and real-time interactions.
 - Distributed Transaction Repair: *Fix-It* feature traps erred transactions, allowing manual retry from any process step or use powerful scripting to automatically handle common errors.
- **Event-based Visibility & Control**
 - Clientless File Monitor: Securely monitor clientless endpoints over FTP for the arrival of new data, driving immediate movement and backend processing based on dynamic rules.
 - Compliance: Track what happens at the *business process* and *service* level assuring corporate governance and SLAs.
 - Graphical Audit Logging: Regardless of distance between systems, centralized log collects process transactions to rapidly pinpoint problems and support organization compliance.

MIM Gateway acts as an intermediary between MIM and hosts without MIM nodes. So, you achieve the best of Metastorm Integration Management with the needs for edge system connectivity. It provides management, auditing, security, and flexible protocols while allowing the right classes-of-service for various project needs.

It achieves Managed File Transfer using Metastorm Integration Manager for transfers between MIM nodes and MIM Gateway node(s). MIM Gateway then manages file transfers to remote locations using an alternate transport (e.g., FTP). This whole function is governed under the control of appropriate Metastorm Integration Manager processes.



Event-based Data Flow – One of Metastorm Integration Manager’s most popular features is the ability to monitor local or network-attached remote files (a “mapped drive”). Upon the arrival of new files, it initiates data integration transactions. This event-based dataflow mechanism creates a sea of enterprise event monitors that instantly react to business data. It sees immediate data flow acted upon just in time. This capability supports near real-time processing while minimizing application complexity.

MIM Gateway extends MIM’s popular event-based directory monitor with a feature called FTP DIRMON (FTP directory monitor). It watches remote hosts that do not run MIM but simply have an FTP Server for changes in the data environment. The MIM Gateway transforms remote and disconnected files into managed events tracked by the MIM processes. Thus, businesses can respond more rapidly to changes while managing workload amongst different interaction models and event types.

```

[✓] Gateway_Receive_File [FTP] (2009-11-05 08:04:58 - 2009-11-05 08:04:59)
  [✓] Get_Remote_File [FTP] (2009-11-05 08:04:58 - 2009-11-05 08:04:58)
    [✗] FTP GET Log [TEXT] (2009-11-05 08:04:58)
  [✓] Perform_MIM_Transfer [SUB] (2009-11-05 08:04:58 - 2009-11-05 08:04:59)
    [✓] Transfer_File (2009-11-05 08:04:58 - 2009-11-05 08:04:59)
      [✓] Send (2009-11-05 08:04:58 - 2009-11-05 08:04:59)
        [✗] DI7ReferenceList [XML] (2009-11-05 08:04:59)
      [✓] Receive (2009-11-05 08:04:59 - 2009-11-05 08:04:59)
        [✗] DI7ReferenceList [XML] (2009-11-05 08:04:59)
      [✓] DeleteSource (2009-11-05 08:04:59 - 2009-11-05 08:04:59)
    [✓] Final_Cleanup [FTP] (2009-11-05 08:04:59 - 2009-11-05 08:04:59)
  
```

Solution Governance – MIM Gateway extends the same kinds of flexible but highly governed capabilities available in Metastorm Integration Manager to third-party endpoints while maintaining the levels of auditing, control, transaction repair, and reporting expected from an Enterprise-class solution. MIM Gateway takes full advantage of the process management features of MIM for end-to-end rule management and auditing of business transactions.

Flexibility with Control – Based on market leading process management features in MIM, the MIM Gateway extends third-party endpoints into existing or net new callable service points and processes. This includes:

- Databases – such as data archiving, data warehousing, or bulk processing
- File Transfer Exits – Both pre and post processing services (i.e. invoke a remote process to consume a transferred file using ftp execute commands)
- Web Services – See changes in a partner's endpoint realize real-time data movement and web service interactions throughout your organization

Customization and Extensibility

One Family, Reused for Value – As a member of a broader Metastorm Integration Manager family, MIM Gateway works together with Metastorm Integration Manager and Metastorm Integration Manager for CICS to enable integration sophistication previously unknown. MIM compliments a corporate Service Oriented Architecture (SOA) and Enterprise Service Bus (ESB) strategy. It often acts as an overall manager of distributed integrations, Electronic Data Interchange (EDI) translators, and other technologies common to large organizations. The service-enabling capabilities of MIM allow all of these interactions to benefit from common auditing and error capturing and handling across a unified architecture.

Integrating Corporate Disciplines as well as Data – Optionally, MIM Gateway, together with Metastorm Integration Manager, brings together corporate disciplines of Enterprise Architecture and Business Process Management through sister capability in Metastorm ProVision and Metastorm BPM. This powerful capability provides an easy-to-use visual palette. Enterprise Architectures can define, share, collaborate with, and monitor the lifecycle of integration projects—providing across-the-organization discipline and governance of corporate systems, data, and processes. Likewise, Business Process Management functions, including amazingly fast inception-to-deployment capabilities in Metastorm BPM, allow organizations to not only operate integrated data systems. It incorporates the people and related processes into a cohesive process and data flow across the organization and beyond.

Product Prerequisites - Overview

- **Operating Systems**
 - Windows XP
 - Windows Server 2003
 - Windows 2008
 - IBM AIX 5.2, 5.3, & 6.1
 - Sun Solaris 9 & 10 (SPARC)
- **Metastorm Integration Manager**
 - Version 8.1.8.6
 - Version 8.5

For more information, visit <http://www.metastorm.com>.

© Copyright 2010/9/7/2010, Metastorm Inc. All rights reserved. Enterprise Process Advantage, Metastorm BPM, Metastorm Discovery, Metastorm DNA, Metastorm Enterprise, Process Pod and ProVision are either registered trademarks or trademarks of Metastorm Inc. Other product, service and company names mentioned herein are for identification purposes only and may be trademarks of their respective owners. 9.7.2010/9/7/2010.