

# Metastorm Integration Manager Rapid: Gateway Framework



## Maximize Your MIM Gateway Investment

The Metastorm Integration Manager (MIM) Gateway Framework is an integrated service offering that extends the valuable capabilities of MIM to end-point systems where MIM is not or cannot be installed. The Gateway provides the facilities to send and receive data to and from non-MIM nodes using alternative file transfer mechanisms such as FTP, SFTP, FTPS, or other proprietary commercial products such as Sterling Commerce's CONNECT: Direct or CA XCOM.

If you've extended your MIM infrastructure to non-MIM Nodes by deploying the MIM Gateway Framework, you can manage and audit data movement to and from servers that only support FTP, SFTP, FTPS, XCOM, or CONNECT: DIRECT. But how do you ensure that you are getting the most out of it? Have you customized and extended the framework – or do you need to include a new transport protocol other than the supported “out-of-the-box” protocols? Perhaps you need to add functionality to include exit points like file encryption or file validation. Or maybe you just need to have a consultant ready as you promote the framework into production.

Deployment of the Gateway Framework involves careful planning. Some customers require several gateway nodes, sometimes as Enterprise Servers, sometimes as stand-alone gateway nodes. Gateway nodes can be outside or inside of DMZ zones for security, which requires security and firewall setup.

The Gateway acts as a conduit between MIM nodes and non-MIM nodes. Managed File Transfer is achieved by using MIM (over WMQ) to perform the file transfers between the MIM nodes and the Gateway node(s). The Gateway manages the file transfers to/from the remote locations using an alternate transport (e.g., FTP) under the control of various MIM services. Tuning of these service components is also critical in ensuring optimal throughput via the Gateway.

We know every organization's situation is different. You can choose a delivery method that best fits your needs. The MIM Rapid Gateway Framework is offered as either:

- A packaged service from Metastorm, including requirements discovery, architecture, and the implementation of the MIM Gateway Framework, plus

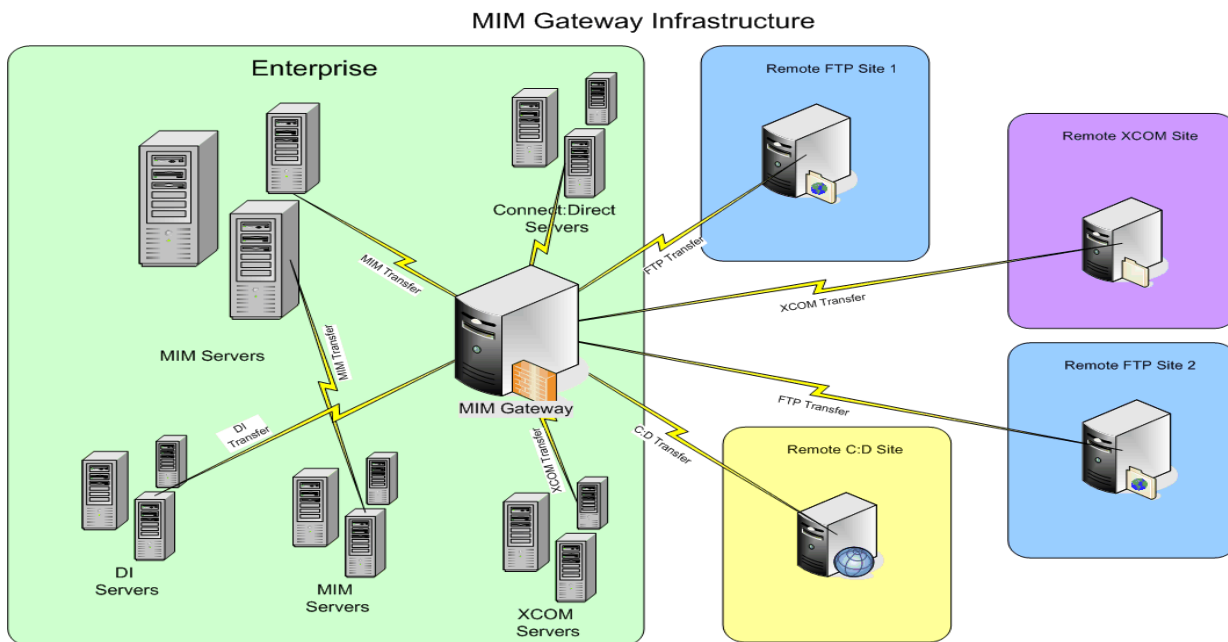
## Highlights

### Benefits

- Successful planning, enterprise integration, project management, technical support and education
- Expert consultants who understand the MIM Gateway Framework, as well as integration strategy, technology, and operations challenges
- Assistance in installing, configuring, and testing transfers to non-MIM nodes via the Gateway
- Guidance in extending the Gateway Framework to include other protocols
- Maximized investment in MIM Gateway Framework
- Diverse partner access to complement the Metastorm team

designing and building some initial file transfer requests to one or two non-MIM nodes; or

- A customer-driven initiative to customize or extend the Gateway Framework to address specific capabilities not currently included in the product (i.e. alternate protocol support, exit point processing).



## Proven Implementation Methodology

The Metastorm Rapid Delivery Framework (RDF) is a robust and adaptable approach to rapidly deploying your BPM and Integration initiatives. Developed and continuously enhanced by the industry experts of the Metastorm Professional Services team, the best practice delivery methodologies of the Metastorm RDF help you increase speed to value and establish a solid foundation for on-going process and system improvements by fully leveraging the depth of capabilities and flexibility offered in the Metastorm BPM® and Metastorm Integration Manager software solutions.

With a strong customer focus and emphasis on collaboration, the Metastorm RDF helps ensure your implementation is easily understood and embraced. The five phases of the Metastorm RDF include:



- *Engagement* – project discovery and initiation
- *Collaboration* – communication of requirements, initial prototyping
- *Definition* – detailed solution and architecture design, enhancement of prototype to convert to development model
- *Construction* – enhancement of development model to convert to complete application, project team testing
- *Transition* – customer QA and user acceptance testing, deployment activities

Throughout the entire engagement, you maintain full project visibility and participation, allowing checkpoints and milestones to be easily tracked and measured by everyone involved. The Metastorm RDF approach to implementation perfectly complements the Metastorm Enterprise™ portfolio of solutions, enables the transfer of knowledge and skills to your team, and helps you achieve a rapid and successful solution roll-out that delivers immediate results.

## Why Metastorm?

Metastorm and our integrated support network have the experience and resources necessary for successful planning, enterprise integration, customization, project management, technical support and education to help you get the most out of your Metastorm investment. We offer the right combination of the industry's top people and solutions to help you meet your business objectives. Metastorm Professional Services deliver:

- Expert consultants who understand BPM and integration strategy, technology and business process challenges in your industry
- Proficient trainers experienced in knowledge transfer
- Superior customer support for immediate response and results
- Diverse partner access to complement the Metastorm team

Metastorm is committed to your success and to building a long-lasting relationship that helps you realize a strong return from your investment – both now and into the future. Let our Professional Services team help you take full advantage of Metastorm technology by analyzing your business and system processes, identifying issues, and transforming them into efficient Metastorm processes.

Copyright 2009, Metastorm Inc. All rights reserved. Enterprise Process Advantage, Metastorm BPM, Metastorm Discovery, Metastorm DNA, Metastorm Enterprise, Process Pod and ProVision are either registered trademarks or trademarks of Metastorm Inc. Other product, service and company names mentioned herein are for identification purposes only and may be trademarks of their respective owners. 10.7.2008.